



## GEN-IV MAGNUM AIR CONDITIONING UNIT

Now you can enjoy true bi-level, infinitely adjustable comfort in your classic car. This large system can handle even the largest sedan or wagon.

**GEN-IV™ SYSTEMS include** • Evaporator and Mounting Brackets  
• Wiring Harness • Electric Solenoid Heater Control Valve • A/C Duct Hoses • Drain Kit • Defrost Kit Includes Hoses and Ducts

### Gen IV System features:

- Fully electronic operation, No cables or vacuum controls
- Micro-processor controlled coil temperature monitor. No capillary tube to install!
- Separate high capacity heat and cool coils
- Aluminum plate/fin A/C coil
- Copper/brass Cuprobrazed™ parallel flow heater coil
- In full A/C mode air by passes heater core resulting in less restriction and increased airflow.
- Blend air door for instant temperature adjustment
- Infinite dash/floor air blend
- Infinite defrost /floor air blend with dedicated defrost
- Variable speed blower motor
- Positive shut off solenoid operated heater control valve in max A/C
- Multiple control panel options

Dimensions: 26" long, 10.5" deep, 10.5" high

**Controls and vents must be purchased separately.**

671400-VUZ GEN-IV Magnum - Heat, Cool & Defrost . . . \$699.00



## BASIC GEN-IV CONTROL PANELS

Streamline 3 knob panel is available for the Gen-IV Magnum. Features soft white LED lighting through the knobs.

- 491210-RUA Polished horizontal . . . . . \$199.00
- 491214-RVA Polished vertical . . . . . \$199.00
- 491223-RUA Black anodized horizontal. . . . . \$209.00
- 491226-RVA Black anodized vertical. . . . . \$209.00



## GEN II HEATER WITH DEFROST

The ideal system for trucks and smaller hot rods. Servo motor controlled air door and heater coolant control valve. Controls operate temp, fan speed and heat/defrost balance. Order ducts and vents separately. Dimensions: 9.250" long, 5.5" deep, 10" high

- 506101 Heater with defrost . . . . . \$229.00
- 50616-VUZ Bi-Level Heater with defrost . . . . . \$249.00



Super Cooler 61005 Series



Compac 68000 Series

Mini 66005 Series

## GEN-II AIR CONDITIONING UNITS

GEN-II Vintage Air units use servo motor control technology. They feature true bi-level operation in cool and heat modes and a more powerful dedicated dehumidified defroster mode.

**GEN II™ SYSTEMS include** • Evaporator and Mounting Brackets  
• Wiring Harness • Electric Solenoid Heater Control Valve  
• A/C Duct Hoses • Drain Kit • Defrost Kit Includes Hoses and Ducts

**Controls and vents must be purchased separately.**

### GEN II SUPER COOLER 61005 SERIES

Amazing performance is achieved with the GEN II Super's "D" shaped air outlets. As an added benefit, you can position all 4 louvers wherever you need them. The ideal system for the largest sedans and wagons.

Dimensions: 24" long, 8.5" deep, 8.5" high

- 61005-VUX-A GEN II Super -heat & cool . . . . . \$470.00
- 61005-VUZ-A GEN II Super - heat, cool & defrost . . . . \$490.00

### GEN II COMPAC 68000 SERIES

Excellent performance with three 2-1/2" vents allowing you to position louvers wherever you need them. Ideal for coupes and smaller sedans.

Dimensions: 20.5" long, 7.5" deep, 9" high

- 68000-VUX-A GEN II Compac -heat & cool . . . . . \$410.00
- 68000-VUZ-A GEN II Compac - heat, cool & defrost . . \$470.00

### GEN II MINI 66005 SERIES

The ideal system for trucks and smaller hot rods.

Dimensions: 19" long, 7.3" deep, 9" high

- 66005-VUX-A GEN II Mini - heat & cool . . . . . \$410.00
- 66005-VUZ-A GEN II Mini - heat, cool & defrost . . . . \$470.00



## BASIC GEN-II CONTROL PANELS

These are basic control panels for GEN-II units. They offer OEM style operation and work with the electronic servo controls. Plug-in connections. No vacuum lines or cables. Cool soft internal lighting.

- 49110-SHQ 4-Lever fingertip horizontal panel . . . . . \$50.00
- 49110-SVQ 4-Lever fingertip vertical panel . . . . . \$50.00
- 49200-RHA 4-Knob horizontal, black. . . . . \$50.00

**Call 402.886.2275 or click: [www.heinzmanstreetrods.com](http://www.heinzmanstreetrods.com)**

Air Conditioning Systems



SureFit kits are available for:

- 1955-57 Chevrolets
- 1958-67 Corvettes
- 1968-76 Corvettes
- 1967-78 Camaros/Firebirds
- 1964-69 Chevelle/El Camino
- 1964-67 GTO
- 1966-69 Nova
- 1959-64 Chevy
- 1964-70 Mustang
- 1970-74 Barracuda/Challenger
- 1966-77 Bronco
- 1953-56 Ford F-100
- 1947-55 Chevy/GMC trucks
- 1955-86 Chevy trucks

## VINTAGE AIR GEN IV SUREFIT SYSTEMS

Vintage Air Gen IV SureFit air conditioning, heating and defrost kits retrofit popular 50s, 60s and 70s cars and trucks with modern climate control systems. The Gen IV systems feature all electronic controls requiring no cables, capillary tube or vacuum connections. They are truly "fly-by-wire". These Gen IV systems use separate heating and cooling coils for superior performance. The internal air control doors are servo operated to provide infinite dash, floor and defrost blending. SureFit kits are designed to install with minimal drilling and no fabrication required. Some kits include replacement control panels or modifications to existing controls.

**Most complete kits include** • Air conditioning, heating and defrost combination designed specifically for your vehicle complete with all mounting brackets, hardware, louvers, duct hose, controls, wiring harness and installation instructions. • SuperFlow™ condenser, mounting brackets • standard drier • safety switch • pre-formed aluminum lines • firewall cover plate • all mounting hardware.

**Evaporator kits** are also available that includes only what is required under the dash • Air conditioning, heating and defrost combination designed specifically for your vehicle complete with all mounting brackets, hardware, louvers, duct hose, controls, wiring harness and installation instructions, all mounting hardware.

NOTE: Some installations may require additional engine pulleys not included with kits. You must provide pulleys, v-belts and refrigerant.

**Most complete kits** ..... \$1,400.00  
**Most evaporator kits** ..... \$850.00



## GEN-II UPGRADE CONTROL PANELS

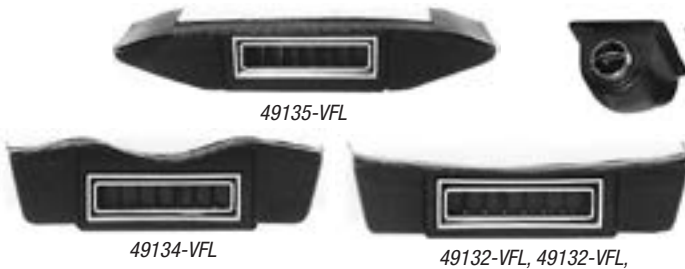
These are basic control panels for GEN-II units. They offer OEM style operation and work with the electronic servo controls. Plug-in connections. No vacuum lines or cables. Cool soft internal lighting.

- 49110-SHQ 4-Lever machined horizontal panel ..... \$50.00
- 49110-SVQ 4-Lever machined vertical Panel ..... \$50.00
- 491200-RUA 4-Knob horizontal, polished aluminum ... \$159.00
- 491229 4-Knob horizontal, black aluminum. .... \$169.00
- 48104-RUQ 3-Knob w/lever oval, polished aluminum . \$159.00
- 481005 3-Knob w/lever oval, black aluminum. . . \$169.00

## DASH LOUVERS

In-dash and under-dash louvers.

- 49051 Rectangular kick Panel ..... \$15.00
- 49054-VUL Round under-dash ..... \$15.00
- 49050-VUL Rectangular under-dash ..... \$15.00
- 49215 Round Slider series- machined aluminum .. \$105.00
- 491902 Oval aluminum. .... \$99.00
- 49062-VUQ Streamline- polished aluminum trim ..... \$45.00
- 49053-VUQ Round- billet aluminum ..... \$28.00



### UNDER-DASH LOUVER PODS

Use these black plastic pods to easily mount louvers to the bottom of the dash panel. Control knobs can also be inserted in the face. With chrome trim louver.

|                   |  |                |
|-------------------|--|----------------|
| <b>49132-VFL</b>  | <b>1928-32 Ford underdash</b> . . . . .            | <b>\$18.00</b> |
| <b>49137-VFL</b>  | <b>1937 Ford, 1930-35 Chevy underdash</b> . . .    | <b>\$18.00</b> |
| <b>49134-VFL</b>  | <b>1933-34 Ford underdash</b> . . . . .            | <b>\$18.00</b> |
| <b>49135-VFL</b>  | <b>1935-36 Ford underdash</b> . . . . .            | <b>\$18.00</b> |
| <b>492000-VUA</b> | <b>Univ. flat underdash- 32" long, 2 piece</b> . . | <b>\$49.95</b> |
| <b>49100-VFL</b>  | <b>Universal flat underdash</b> . . . . .          | <b>\$18.00</b> |



### 134a BARRIER TYPE REFRIGERANT HOSE KIT

Use barrier type refrigerant line for use with HFC-134a and R-12 refrigerants. Includes adequate hose length to connect complete system, all O-ring fittings, fittings with service ports and crimp ferrules. Includes: 6 ft. of #6, 4 ft. of #8, 5 ft. of #10 barrier hose. Standard or extra length kits available.

|                  |   |                |
|------------------|---|----------------|
| <b>31700-VUD</b> | <b>Barb fitting hose kit with black drier</b> . . . . | <b>\$99.00</b> |
| <b>31702-VUD</b> | <b>Barb fitting hose kit w/o drier</b> . . . . .      | <b>\$99.00</b> |
| <b>31700-VBD</b> | <b>Beadlock fitting hose kit with black drier</b> .   | <b>\$99.00</b> |
| <b>31703-VBD</b> | <b>Beadlock fitting hose kit w/o drier</b> . . . . .  | <b>\$99.00</b> |

### STANDARD HEATER HOSE KITS

Includes: 10 feet of 5/8" heater hose, 2 standard male O-ring 90 degree or straight bulkhead fittings, 2 female O-ring 90 degree fittings and 8 hose clamps.

|                  |   |                |
|------------------|---|----------------|
| <b>31400-VUD</b> | <b>90° bulkhead fitting heater hose kit</b> . . . . . | <b>\$49.00</b> |
| <b>31401-VUD</b> | <b>Straight bulkhead fitting heater hose kit</b> . .  | <b>\$49.00</b> |



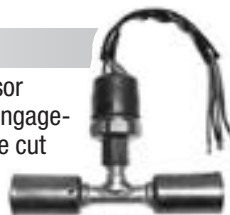
### CHROME DRIER

Features a built in mounting bracket and compact size. 2.5" x 6"

|                  |  |                |
|------------------|--|----------------|
| <b>07310-VUQ</b> | <b>Chrome drier with bracket</b> . . . . .     | <b>\$69.00</b> |
| <b>01311-VUQ</b> | <b>Replacement chrome canister</b> . . . . .   | <b>\$39.00</b> |
| <b>07308-VUQ</b> | <b>Chrome drier w/binary switch</b> . . . . .  | <b>\$75.00</b> |
| <b>07309-VUQ</b> | <b>Chrome drier w/trinary switch</b> . . . . . | <b>\$94.00</b> |

### TRINARY SWITCH KIT

Low pressure and high pressure compressor clutch cut off functions PLUS electric fan engagement signal at 254 psi. 30 psi low pressure cut off. 406 psi high pressure cut off. Recommended for all electric fan installations.



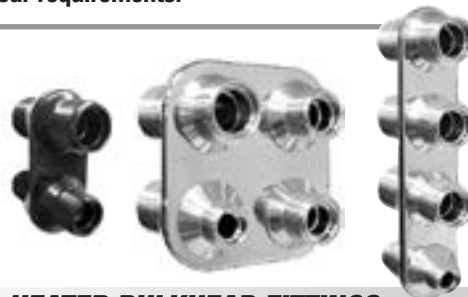
|                  |  |                |
|------------------|--|----------------|
| <b>24676-VUS</b> | <b>Trinary switch kit for barb crimp</b> . . . . .     | <b>\$51.00</b> |
| <b>24678-VUS</b> | <b>Trinary switch kit for beadlock crimp</b> . . . . . | <b>\$51.00</b> |
| <b>11076-VUS</b> | <b>Male thread trinary switch only</b> . . . . .       | <b>\$35.50</b> |



### A/C AND HEATER FITTINGS

We have a large selection of barbed and beadlock O-ring fittings for heating and A/C in #6, #8 and #10 sizes.

Call with your requirements.



### A/C AND HEATER BULKHEAD FITTINGS

An easy way to run the A/C and heater lines thru the firewall. Just drill four individual holes. Gives a weather tight seal and professional look to your installation. Accepts O-ring fittings.

#### FOUR WAY SQUARE- 3.0 X 3.0"

|                   |  |                |
|-------------------|--|----------------|
| <b>384600-MBA</b> | <b>A/C-heater (#6-10 male) polished alum</b> . . . | <b>\$65.00</b> |
| <b>384800-MBA</b> | <b>A/C-heater (#8-10 male) polished alum</b> . . . | <b>\$65.00</b> |
| <b>389600</b>     | <b>A/C-heater (6-10 male) black anodized</b> . . . | <b>\$69.00</b> |
| <b>389800</b>     | <b>A/C-heater (8-10 male) black anodized</b> . . . | <b>\$69.00</b> |

#### FOUR WAY IN-LINE- 1.25 X 5.75"

|                   |  |                |
|-------------------|--|----------------|
| <b>386600-MBA</b> | <b>A/C-heater (#6-10 male) polished alum</b> . . . | <b>\$65.00</b> |
| <b>389804</b>     | <b>A/C-heater (#6-10 male) black anodized</b> . .  | <b>\$69.00</b> |

#### TWO WAY- 1.25 X 2.75"

|                     |  |                |
|---------------------|--|----------------|
| <b>382600-MBA</b>   | <b>A/C (#6-10 male) polished alum</b> . . . . .    | <b>\$41.00</b> |
| <b>382800-MBA</b>   | <b>A/C (#8-10 male) polished alum</b> . . . . .    | <b>\$41.00</b> |
| <b>382680-MBA</b>   | <b>A/C (#6-8 male) polished alum</b> . . . . .     | <b>\$41.00</b> |
| <b>382000-MBA</b>   | <b>heater (10-10 male) polished alum</b> . . . . . | <b>\$41.00</b> |
| <b>389602 2-way</b> | <b>A/C (#6-10 male) black anodized</b> . . . . .   | <b>\$44.00</b> |
| <b>389802 2-way</b> | <b>A/C (#8-10 male) black anodized</b> . . . . .   | <b>\$44.00</b> |
| <b>389603 2-way</b> | <b>A/C (#6-8 male) black anodized</b> . . . . .    | <b>\$44.00</b> |
| <b>389803 2-way</b> | <b>heater (#10-10 male) black anodized</b> . . .   | <b>\$44.00</b> |

Call 402.886.2275 or click: [www.heinzmanstreetrods.com](http://www.heinzmanstreetrods.com)

Air Conditioning and Heating Parts

Air Conditioning System Parts



### SANDEN SD-508 A/C COMPRESSOR

This compressor is recommended for any Vintage Air system. It pumps 8.4 cubic inches per revolution with a maximum 6000 sustained RPM range. Available in standard finish or polished. Available for V-groove, 7 or 8-rib serpentine or 3/4" single belt.

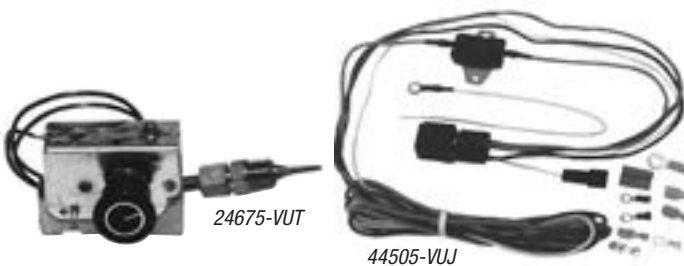
- 04808-VUA** Double V groove pulley-standard finish . . . . . \$199.00
- 04808-VUQ** Double V groove pulley-polished finish . . . . . \$249.00
- 048085** Double V groove pulley-chrome finish . . . . . \$309.00
- 04808-VMA** 7- Groove serpentine pulley-standard finish . . . \$199.00
- 04808-VMQ** 7- Groove serpentine pulley-polished finish . . . \$249.00



### A/C COMPRESSOR HARDLINES

These pre-bent lines give you compact and professional line routing. Designed for Vintage Air brackets, but may work with others.

- 35135-VUG-A** for pre-'35 cars, 134a, polished . . . . . \$59.00
- 35136-VUG-A** for '35-up cars, 134a, polished . . . . . \$59.00



### ADJUSTABLE FAN THERMOSTAT

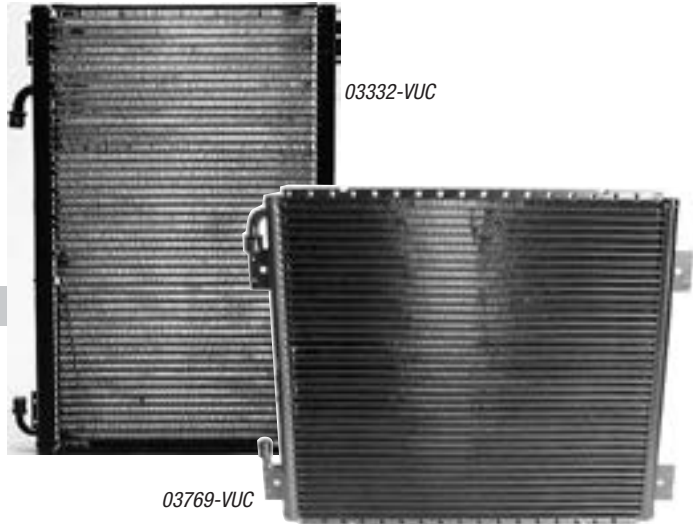
Automatic fan control at your desired temperature setting (180-240 degrees). Probe installs into radiator drain with included pos-a-seal fitting. Use separately or with A/C trinary function safety switch. Fan wiring kit recommended.

- 24675-VUT** Adjustable thermostat . . . . . \$39.95
- 23101-VUW** Thermostat wiring kit . . . . . \$35.00

### HEAVY DUTY ELECTRIC FAN WIRING KIT

This fan wiring kit is recommended for all electric fan installations. Allows direct current to fan without placing load on your fan switch. Prevents current feedback when fan is not engaged.

- 23102-VUW H.D. wiring kit** . . . . . \$59.95



### VINTAGE AIR SUPERFLOW™ CONDENSERS

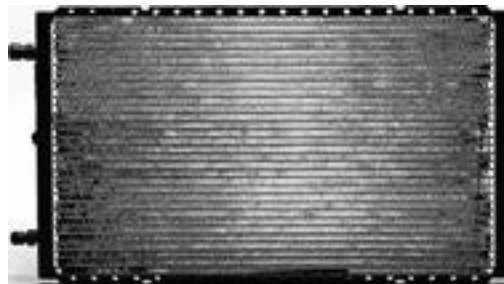
These condensers are designed for street rods, fifties cars and trucks and most late model cars. They are sized to fit in tight spots and still deliver big condenser performance! Vintage Air Designed SuperFlow™ Micro Tube condensers provide increased refrigerant contact with the micro tube walls and multiple passes per circuit. The low restriction pathway has up to 40% more capacity than a comparably sized tube and fin condenser. All condensers include a universal mounting bracket kit. Male O-ring fittings- #8 fitting at top and #6 at bottom.

#### VERTICAL SUPERFLOW™ CONDENSER

- 03332-VUC** 1932 Ford condenser, 20.75 H x 14 W x .75" \$139.00
- 03032-OFV** 1932 Ford condenser kit- includes condenser, hardlines, brackets. . . . \$165.00
- 03769-VUC** 1939-40 Ford, 55-57 Chevy condenser 17 H x 19 W x .75" . . . . . \$149.00
- 03040-VFC** 1939-40 Ford, 55-57 Chevy condenser kit- includes condenser, hardlines, dryer . . . . . \$179.00

#### HORIZONTAL SUPERFLOW™ CONDENSER

- 03701-OVA** 12 H x 20 W x .83" Thick w/brackets. . . . \$117.00
- 03704-OVA** 12 H x 24 W x .83" Thick w/brackets. . . . \$149.00
- 03260-VUC** 14 H x 18 W x .83" Thick w/brackets. . . . \$139.00
- 03261-VUC** 14 H x 20 W x .83" Thick w/brackets. . . . \$139.00
- 03262-VUC** 14 H x 22 W x .83" Thick w/brackets . . . \$149.00
- 03263-VUC** 14 H x 24 W x .83" Thick w/brackets. . . . \$149.00
- 03770-VUC** 14 H x 25.5 W x .83" Thick w/o brackets. . \$139.00
- 037030-OVR** 16 H x 28.5 W x 1.0" Thick w/brackets . . \$179.00



03701-OVA