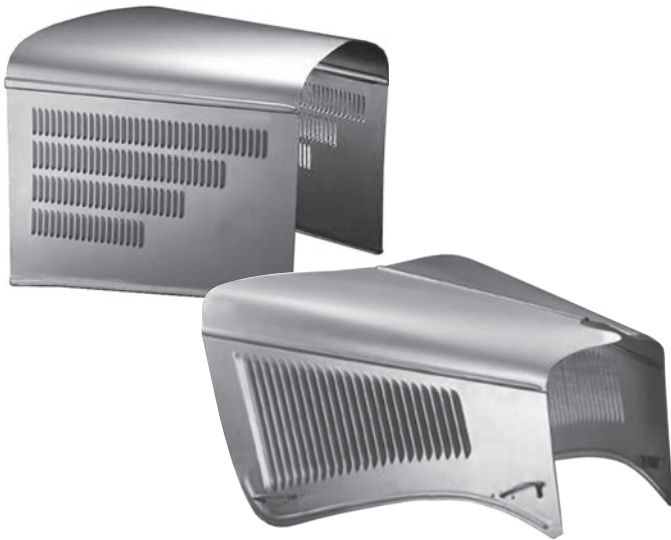


**ROOTLIEB REPRODUCTION STEEL HOODS**



**STEEL HOODS BY ROOTLIEB.**

Four piece hood kits tops include center hinge strip, side panels include hood handles, latch clips, and hinge rods. Three piece hood kits do not include any hardware. Hood tops are available smooth or louvered, Sides are available stock, smooth, with one or two scoops or with three or four row hot rod louver pattern. Please call.

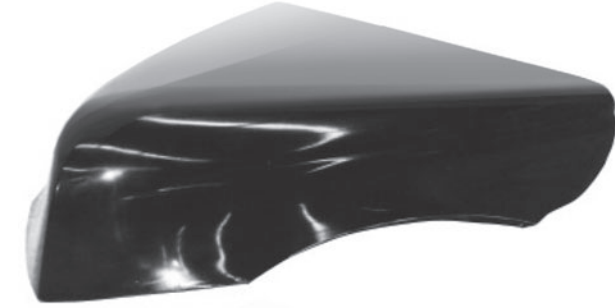
**FORD PASSENGER CAR HOODS** Complete stock style four piece hood with original louvers. One piece top, many other options available

- 1928-29, '32 style center strip . . . . . kit **\$450.00**
- 1930-31, '32 style center strip . . . . . kit **\$485.00**
- 1932. . . . . kit **\$570.00**
- 1933-34 . . . . . kit **\$895.00**
- 1935 stock side louvers not available. . . . . kit **\$725.00**
- 1936 Sides only, plain or louvered . . . . . kit **\$000.00**

**CHEVY PASSENGER CAR HOODS**

- 1932 with stock side doors. . . . . kit **\$000.00**
- 1933 three piece, plain or louvered sides . . . . . kit **\$000.00**
- 1934-35 three piece, plain or louvered sides . . . . . kit **\$000.00**
- 1936 three or four piece, call . . . . . kit **\$000.00**
- 1937-38 Sides only, plain or louvered. . . . . kit **\$000.00**

**1932-36 MOPAR HOODS AVAILABLE TOO! PLEASE CALL.**



**WESTCOTT HOODS.**

**1936 FORD**

- 78-16710 Hood, steel w/handle cutout. . . . . ea **\$675.00**
- 78-16710-SM Hood, steel, no handle cutout. . . . . ea **\$675.00**

**1940 FORD**

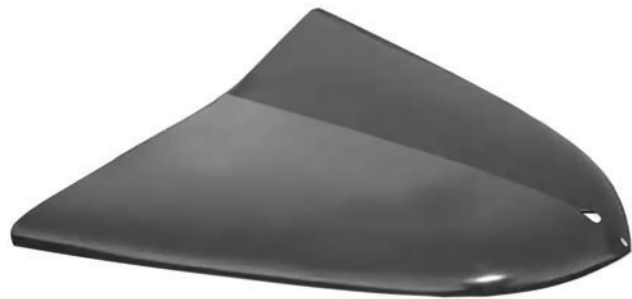
One piece fiberglass with internal steel cage. Hood latch and hinges mount to steel structure.

- HD39DP 1939 Deluxe & 1940 Standard Pass. . .ea **\$1175.00**

**BOB DRAKE 1937 FORD HOOD**

Beautiful die-stamped steel. Better than the original

- 78-100 original . . . . . **\$600.00**
- 78-101 smooth. . . . . **\$600.00**



Steel and Fiberglass Ford Hoods